

Servoy Model Tool Installation

This document explains in details the steps required to install the Servoy Model Tool Serclipse plugin in Servoy. Please refer to the Servoy Model Tool documentation for details on how to use the software once installed.

Please note:

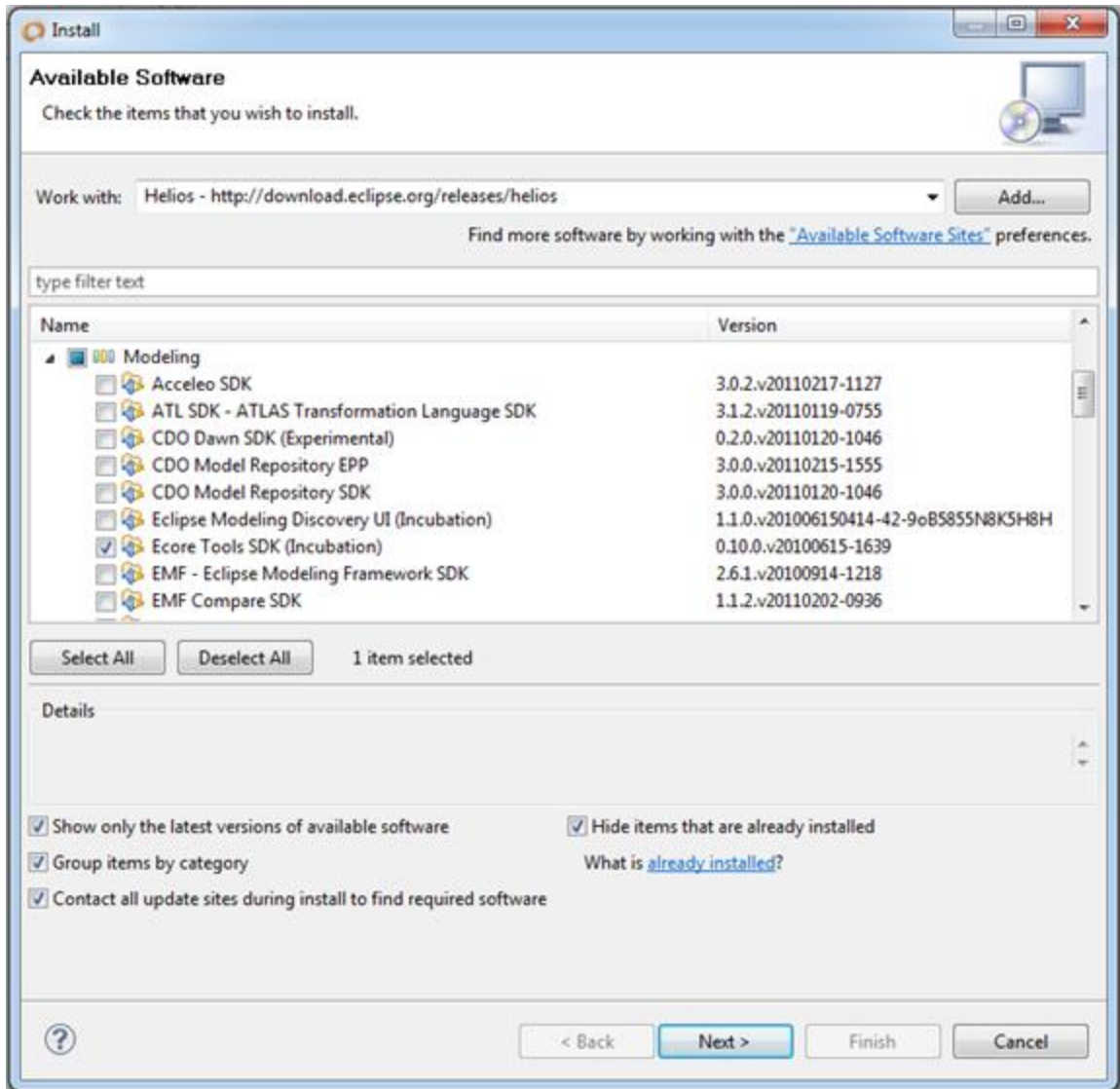
The Servoy Model Tool is built on the Graphiti framework, which itself relies on the Ecore tools, so you will first need to install these before installing the plugin itself.

The Servoy Model Tool can only be installed in Servoy 6.0.x (and 6.1+), because it relies on Eclipse Helios - 3.6 - minimum (Servoy 5.2 is based on Galileo, 6.0 on Helios, 6.1 will be based on Indigo). Do NOT attempt to install on Servoy 5.2 as the minimal requirements for the Graphiti framework will not be present and the installation will fail...

1. Install the Modeling > Ecore Tools SDK

This plugin is in the standard Helios/Indigo release update site, so you should already have the link for it in your Available Software sites, under the name "Helios" (or "Indigo" for Servoy 6.1). The URL for Helios is <http://download.eclipse.org/releases/helios> the one for Indigo is <http://download.eclipse.org/releases/indigo>

Activate that if it isn't already then go to "Help > Install New Software..." and select it. You should see a category "Modeling", open that node and select the Ecore Tools SDK:



Follow the instructions to install. You will need to restart Servoy after the installation.

2. Install the Graphiti framework

First, add a new entry in your "Available Software Sites" preferences "Install/Update":

Call it "Graphiti" or "Graphiti Milestones" and use this url for Servoy 6.0.x:

<http://download.eclipse.org/graphiti/updates/0.8.2>

or this one for Servoy 6.1.x:

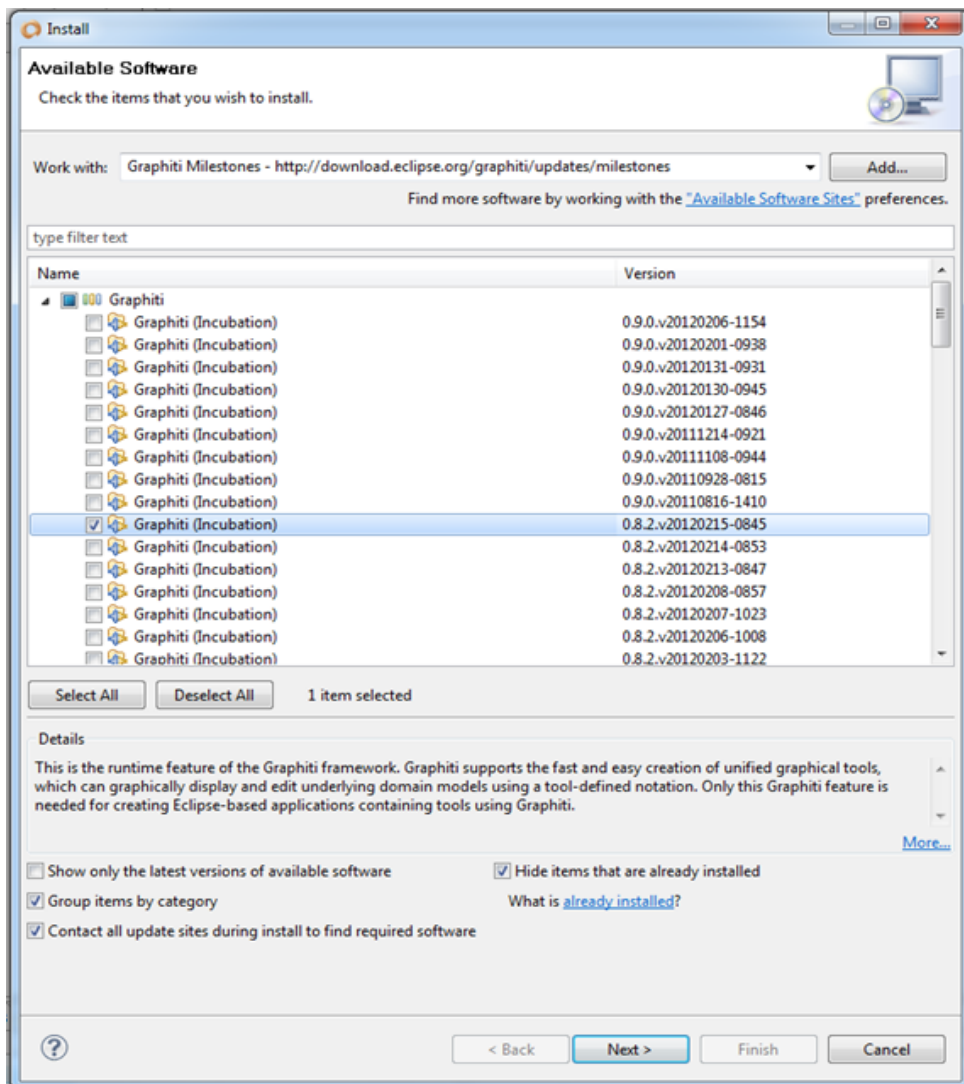
<http://download.eclipse.org/graphiti/updates/milestones>

Now go to "Help > Install New Software..." and select this new entry.

By default, it will show you the last version, except that right now it's build for Eclipse Indigo or Juno, so it won't work on Helios, which is what Servoy 6 is based on.

So you need to deselect the "Show only the latest versions of available software".

You need to check the "Graphiti (Incubation)" latest 0.8.2.xxx for Servoy 6.0.x (or 0.9.xxx with Servoy 6.1+):



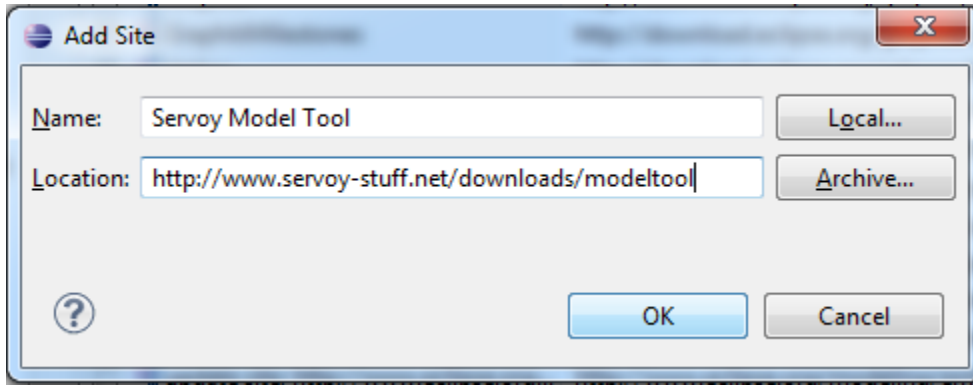
Follow the instructions to install. You will need to restart Servoy after the installation.

3. Install the Servoy Model Tool plugin

You now need to add an entry in your "Available Software sites" again.

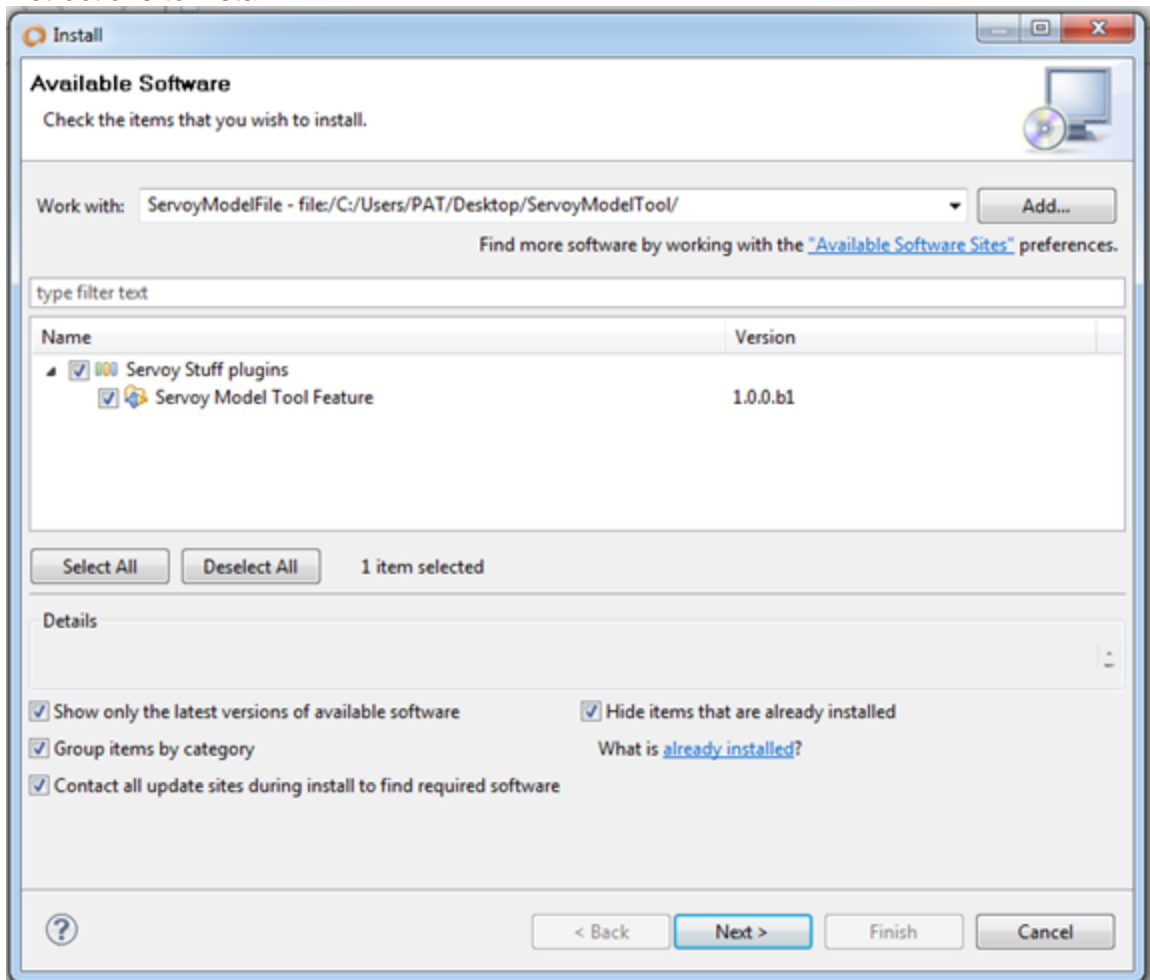
Name it "Servoy Model Tool" and point it to

<http://www.servoy-stuff.net/downloads/modeltool>



Now for the last time, go to "Help > Install New Software..." and select it.

If there's more than one version, select the latest (and greatest! :), then follow the instructions to install:

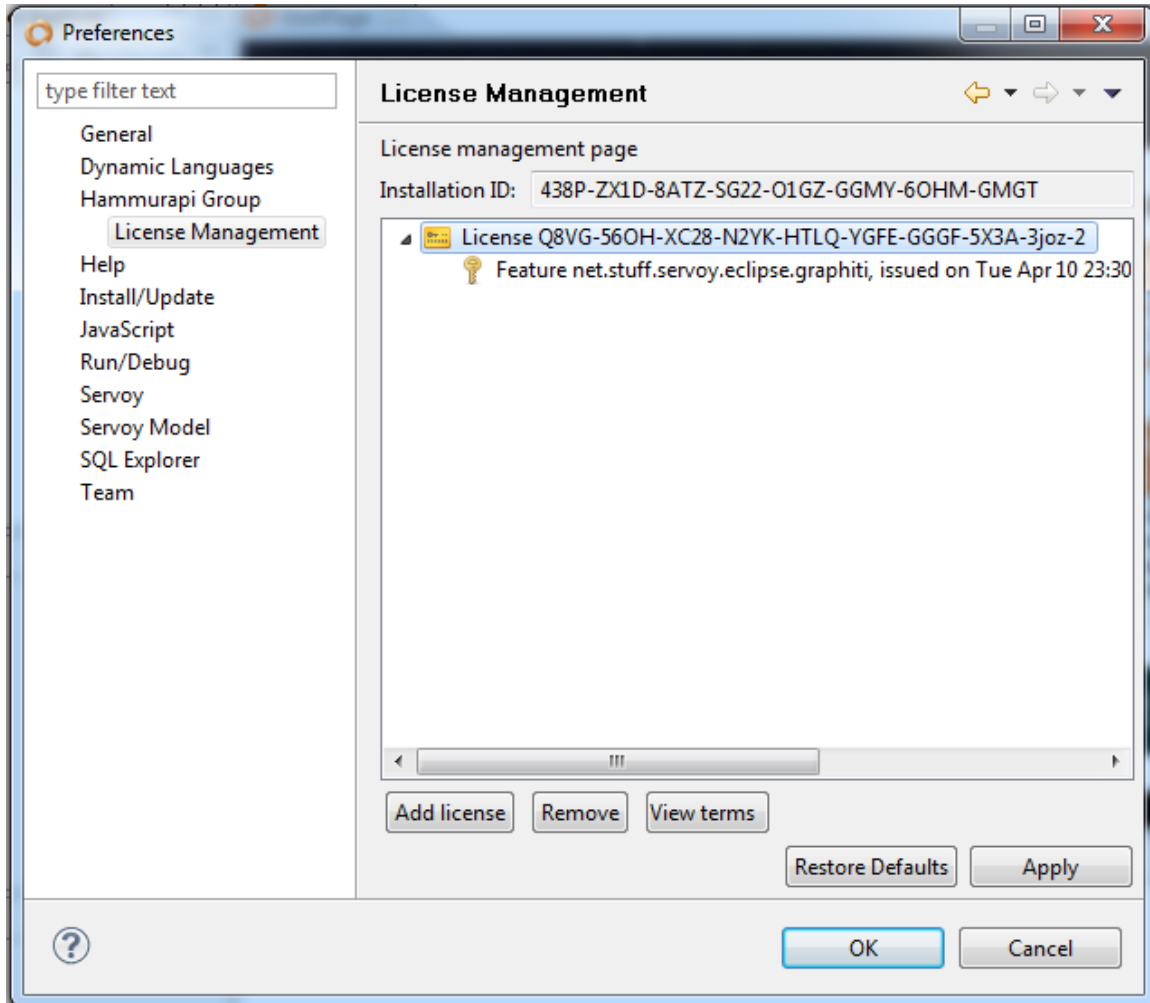


After a restart, you will finally need to activate a license before using the software.

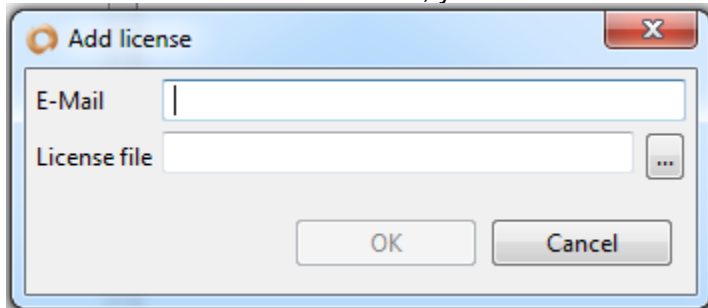
Install a license

You will need a valid license to use the plugin. You can find a trial license (valid for 30 days) here: <http://www.servoy-stuff.net/modeltool/trial-license.zip>

Unzip the file, you will find a .lic file in there. In Servoy, go to “Window > Preferences” then open the “Hammurapi Group > License Management” preferences page:

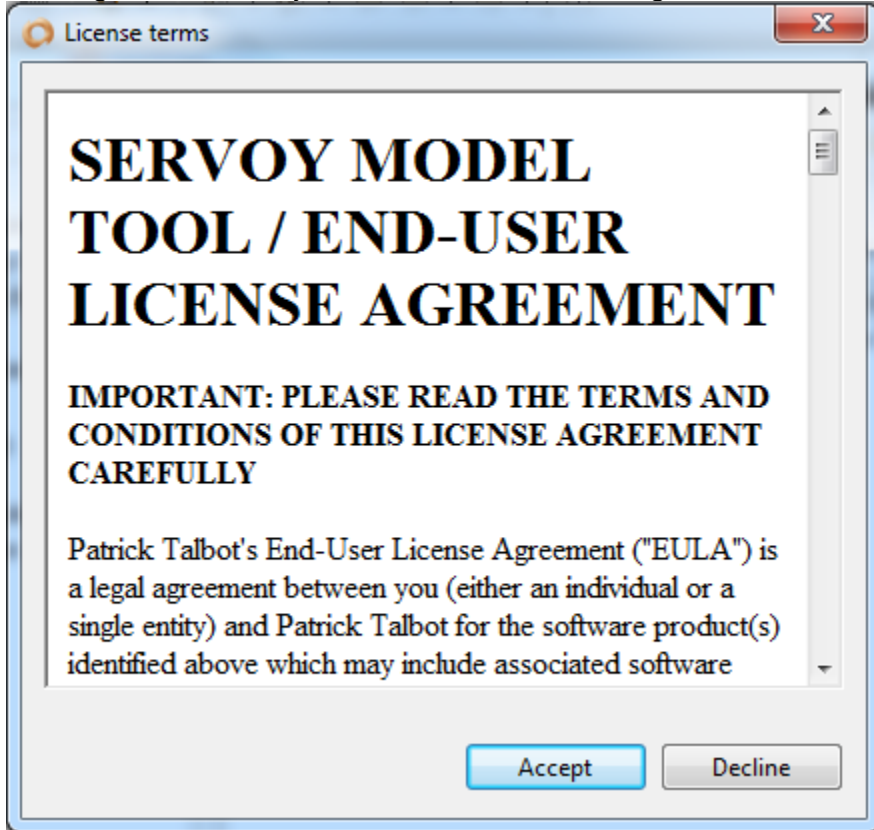


Click on the ‘Add license’ button, you will see this dialog:



For a trial license, you will need to use 'demo@servoy-stuff.net' as email.
Then click on the '...' button to point to the .lic license file.

Clicking OK will show you the License terms dialog:



Read the license terms and click 'Accept' to activate the software.

Once you're done with your trial, you will need to buy a valid license.
Licenses are granted per machine from the Application ID generated by the Hammurapi Group license manager (you can copy it from the 'Installation ID' field in the License Management preferences page).

You can use the Paypal form here <http://www.servoy-stuff.net/model.php> first pasting your Installation ID(s) in the form's text area. After your payment has been processed, you will receive an email with your license(s) within one to two business days maximum.

You can order more than one license (and get a better price), simply copy your Application IDs one per line in the form's text area.

If you purchase an Enterprise license, you won't need to provide Installation IDs, and you will be granted license to install the software on any machine on your local network.

In any case, when you install a license, the email to use will always be the one that has been provided in the Paypal form.

Updates

To update the plugin, simply make sure the Servoy Model Tool is active in your “Window > Preferences > Available Software sites”

Then launch "Help > Check for updates".

The new version will be picked up automatically; all you have to do is follow the instruction to install...